



An Affordable Housing Project
By
ROF Infratech & Housing Pvt. Ltd.

COMPANY PROFILE

In 1983, ROF was started with the vision of creating beauty in intimate spaces by its current Managing Director, starting with a single showroom that had a singular focus on sanitary ware. Over the following two decades the showroom expanded under his astute business instincts and vision into Delhi's biggest showroom of sanitary ware "Bath & Light". "Bath & Light" has since become a landmark in its area of operation, G.K- 2 for its quality, diversity and integrity.

During the years before the founding of ROF, Mr. Mittal imported sanitary products for all the leading builders of the time, ranging from China, Italy to Spain.

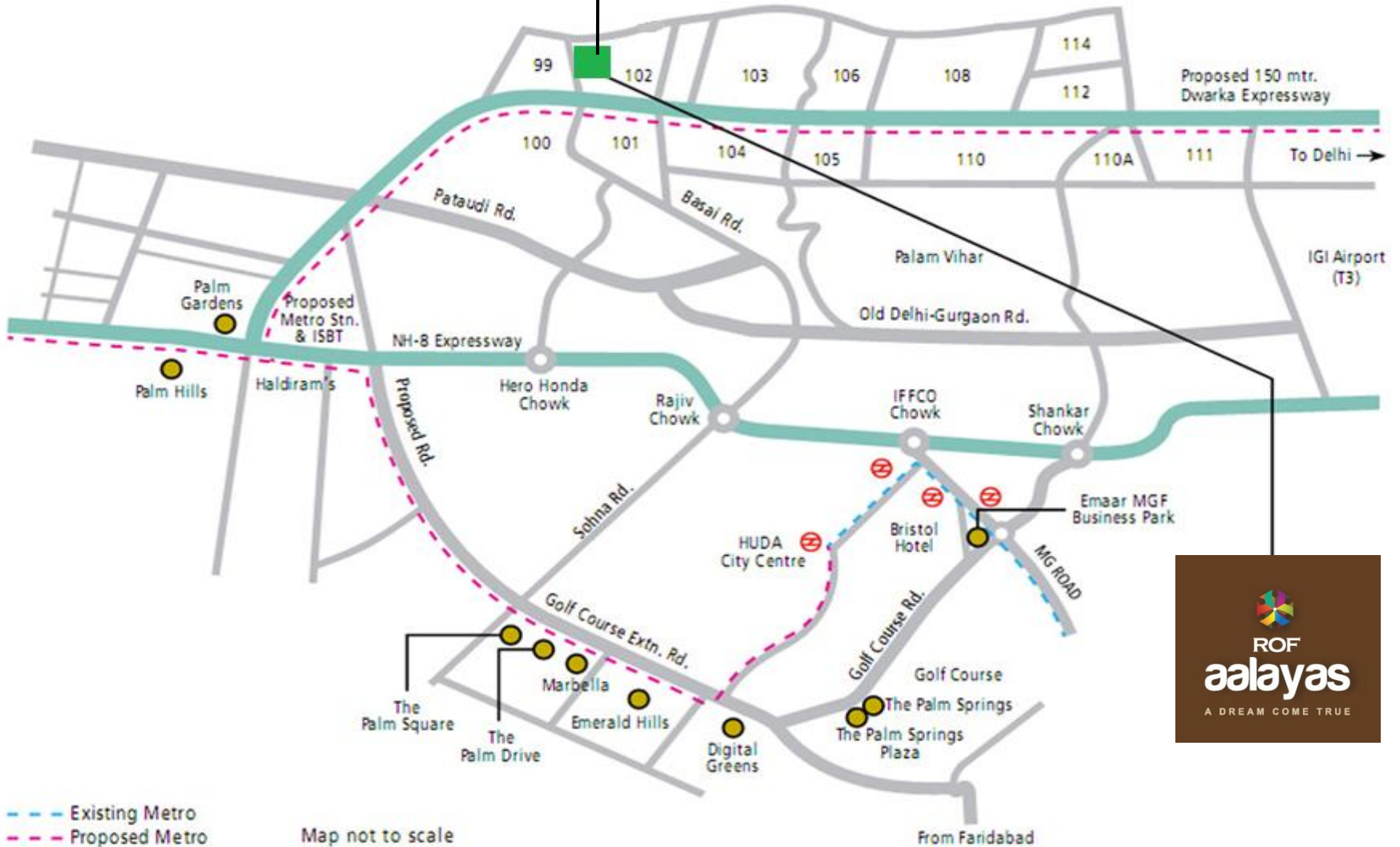
In 2003, he made his first foray with a massive construction project of 220 flats over 5 acres at the soon-to-boom sector of Indirapuram in Ghaziabad, The immensely successful maiden project was a precursor to many great things in store. ROF has continued to excel and diversify into "built- to- suit" office and home spaces starting in 2006 to various successful projects in the residential, office, commercial and hospitality spaces. In addition to all this, ROF even gives out space for lease. The growth has remained consistent with the vision. We have created spaces that envelop people with a feeling of being someone special and it comes with an underlying touch of sophistication, immersed in edgy modernity.

ROF AALAYAS – An Affordable Housing Project



LOCATION MAP

**ROF
AALAYAS**



LOCATION BENEFITS

- ❖ 15 min drive for International Airport T3..
- ❖ 400 Meters distance for Proposed Metro Station.
- ❖ 10 minutes drive for Sultanpur Bird Sanctuary.
- ❖ 8 km distance for Proposed Diplomatic Enclave.
- ❖ 800 Acres Green Area opposite this site
- ❖ Surrounded by Luxury Group Housing by Emaar MGF; Adani and a huge township by BPTP in the neighborhood

PROJECT FEATURES

- ❖ Located at Dwarka Express way in Sec-102, Gurgaon.
- ❖ Choice of 1 & 2 BHK Apartment.
- ❖ Approx. 5 Acre area of Project.
- ❖ Provision for Nursery School.
- ❖ Daily needs and other retail facilities within walking distance
- ❖ Club House for social gatherings and Power Networking.
- ❖ Sports Courts for your sporting Indulgence.
- ❖ Gymnasiums to tone you up and shape you stay on top of your game.
- ❖ Natural Green Gardens for you to feel minty fresh.
- ❖ Jogging Tracks to have a healthy Lifestyle.

SPECIFICATIONS

- ❖ **Flooring:** Living/Dining, Bedrooms/Hall/Kitchen/Toilets/Balconies - Vitrified & antiskid Ceramic Tiles .
- ❖ **Wall Finish:** plaster with OBD.
- ❖ **Wall Finish:** Tiles up to 2 feet high above Marble/Granite counter & OBD/Color Wash in balance area / Ceramic Tiles.
- ❖ **Kitchen:** Slab platform, Single bowl SS sink.
- ❖ **Door Frame/Doors:** Painted Hardwood / M.S / Fiber Door frames with flush door / Skin Door / Fiber Door.
- ❖ **Surrounded by Luxury Group Housing by Emaar MGF; Adani and a huge township by BPTP in the neighborhood.**
- ❖ **Windows:** Z-section / Powder coated / anodized aluminum frame windows.
- ❖ **Chinaware & CP Fittings:** Standard Fitting.
- ❖ **Electrical - ISI Marked,** products for wiring, switches/sockets.
- ❖ **Common Area Flooring:** Kota Stone / Pavers; Lift Lobby – Granite / Marble / Tiles.
- ❖ **Security:** Gated Complex

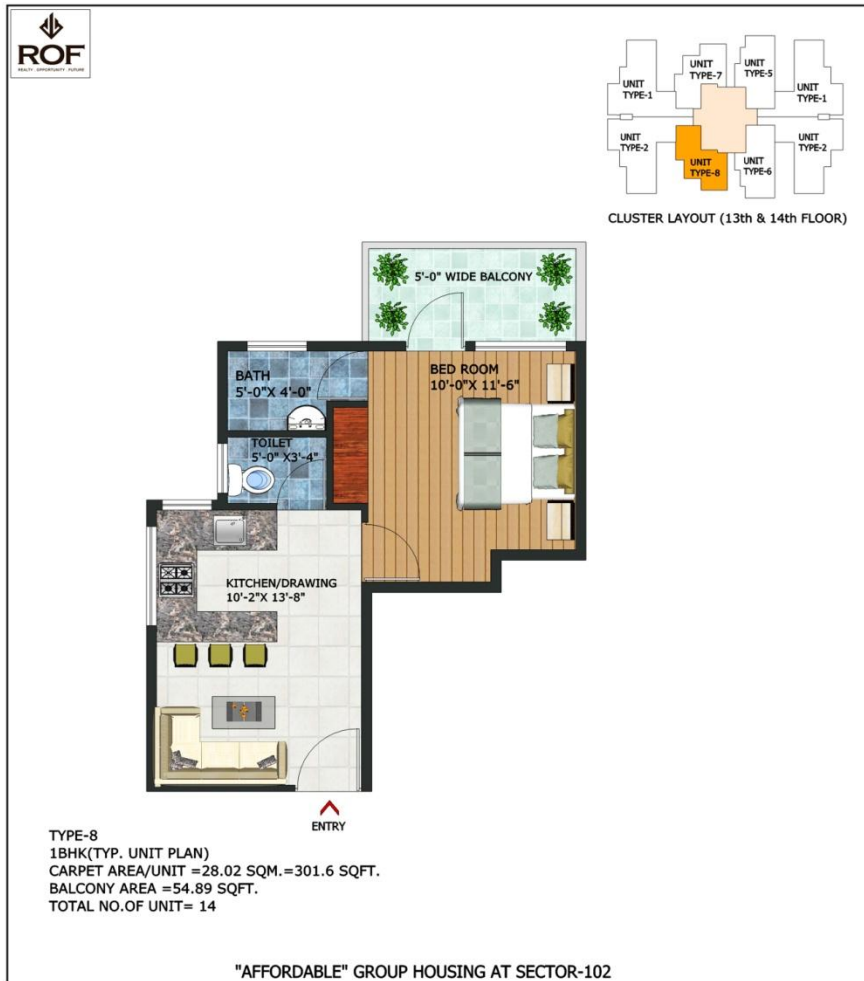
PROJECT LAYOUT



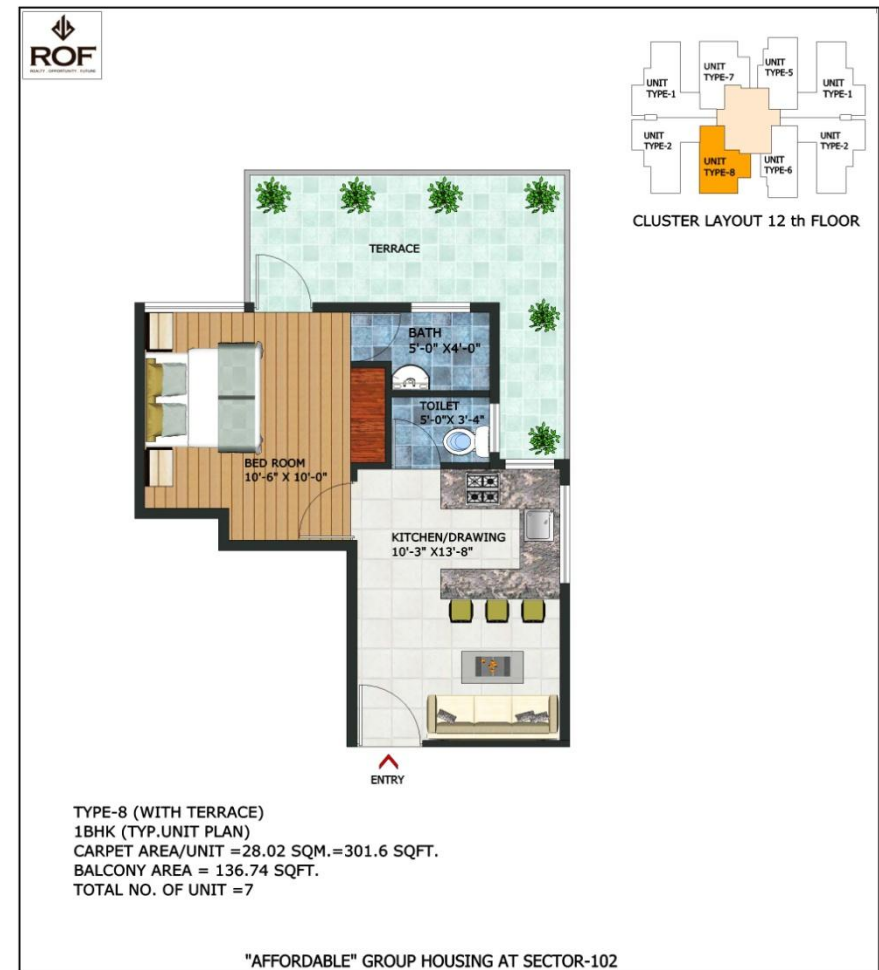
FLOOR PLANS

1 BHK Apartments

Carpet Area: 356.49 Sq. Ft.



Carpet Area: 438.34 Sq. Ft.(with Terrace)



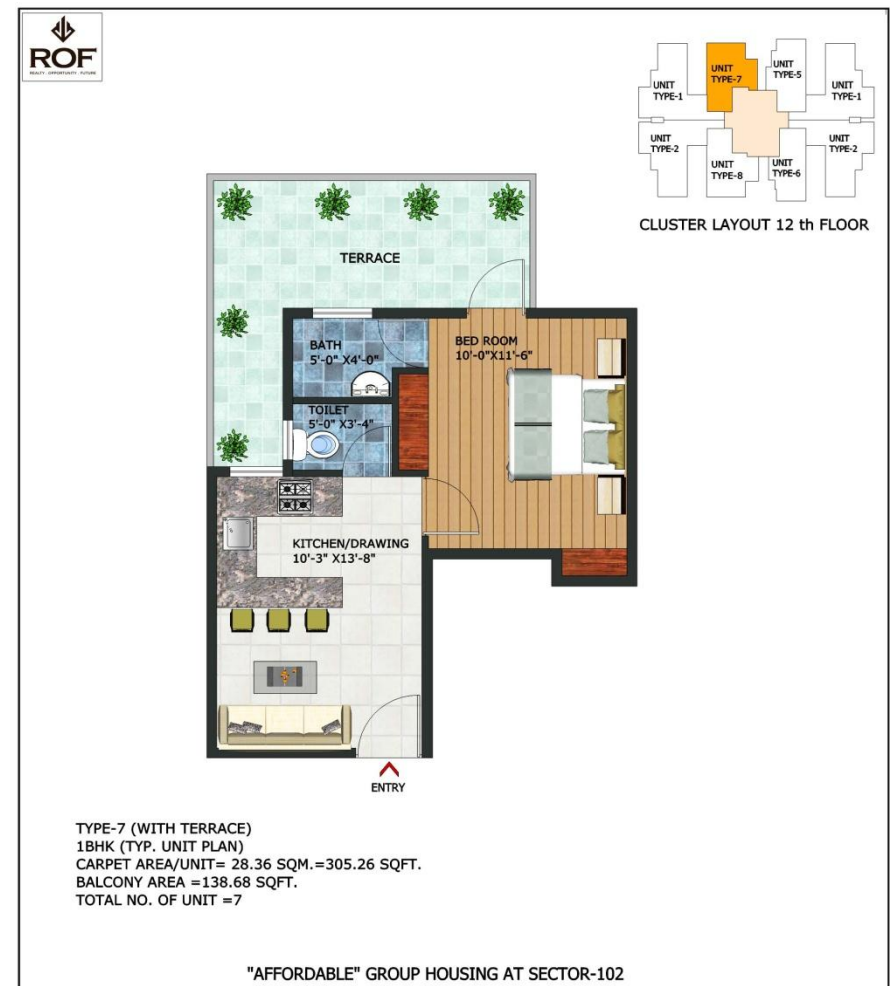
FLOOR PLANS

1 BHK Apartments

Carpet Area: 357.68 Sq. Ft.



Carpet Area: 443.94 Sq. Ft.(with Terrace)



FLOOR PLANS

1 BHK Apartments

Carpet Area: 363.81 Sq. Ft.



Carpet Area: 403.41 Sq. Ft.



FLOOR PLANS

2 BHK Apartments

Carpet Area: 482.48 Sq. Ft.



Carpet Area: 490.3 Sq. Ft.



FLOOR PLANS

2 BHK Apartments

Carpet Area: 596.1 Sq. Ft.



Carpet Area: 596.75 Sq. Ft.

